

Off-Site Solutions

Product Selector



*Building
to the Power of*



Kingspan Off-Site's solutions provide lifetime low energy and low Carbon (CO₂) emissions across any masterplan, ensuring your buildings are Future Proofed

Kingspan Group plc provides construction solutions and systems across all sectors of the global property market.

Kingspan have manufacturing, distribution and commercial operations throughout Europe, USA, Australia, Asia, the Pacific Rim and the Far East in 35 locations, 25 of which are manufacturing.

Kingspan Off-Site is one of the country's largest and most experienced manufacturers and exponent of modern methods of construction. With an extensive track record in delivering timber frame systems, steel frame solutions, structural insulated panel systems (SIPs) and a myriad of hybrid systems.

Kingspan Off-Site MMC systems offer a range of solutions superior to existing on-site construction practices. Kingspan sustainable systems comply with the **Code for Sustainable Homes Levels 3, 4 & 5, including the Carbon neutral Level 6.**

From private and affordable housing through to education, healthcare and commercial buildings, Kingspan offer a range of effective off-site future-proofed solutions **across any masterplan.**





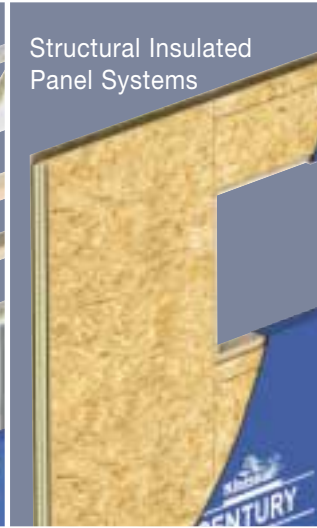
Timber Frame Systems



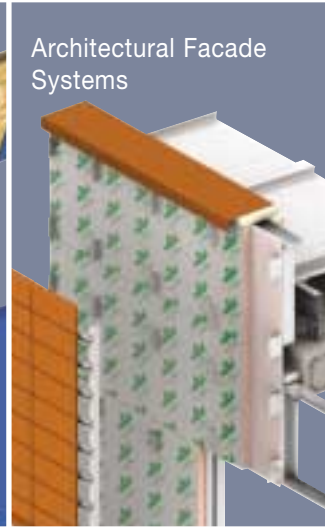
Steel Frame Systems



Hybrid Systems



Structural Insulated Panel Systems



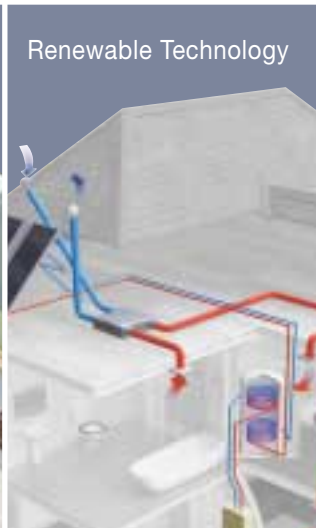
Architectural Facade Systems



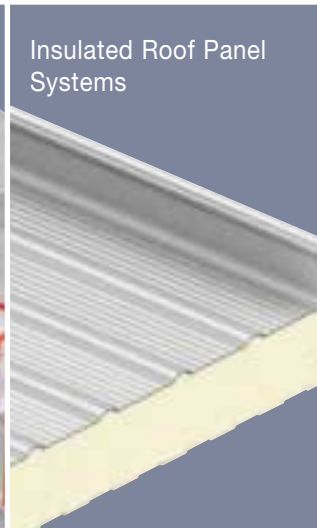
Kingspan Fabrik GRC Facade



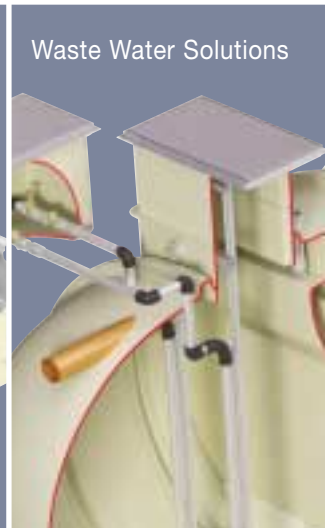
Balconies



Renewable Technology



Insulated Roof Panel Systems



Waste Water Solutions

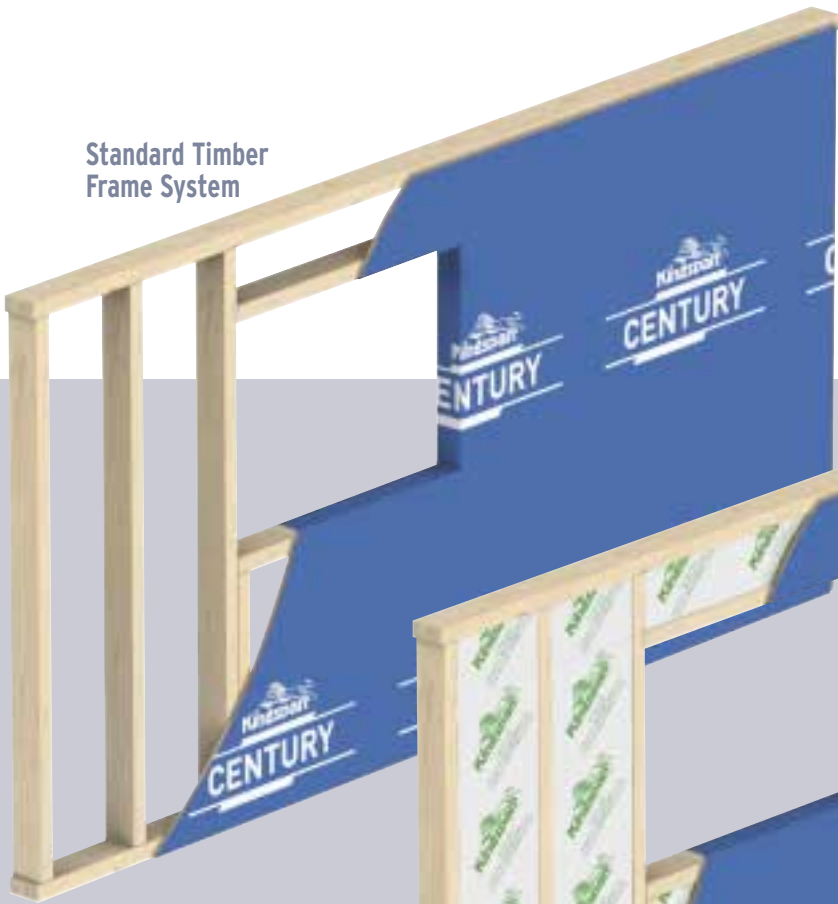
Timber Frame Systems

Timber frame is the most commonly used form of construction in the western world due to its sustainability and durability. Kingspan timber frame systems are now leading the way in the residential sector by utilising modern methods of construction to create off-site solutions and components, quality built and tested before delivery to site.



- *Faster construction*
- *Superior quality*
- *Predictable and reliable programme*
- *Reduced labour costs*
- *Zero carbon solutions*

Standard Timber
Frame System



Pre-fit Insulated
System



Pre-fit Insulated
and Airseal System

Timber Frame Systems



***Suitable for buildings up to 4 storeys
across the following sectors:***

- *Private and affordable housing*
- *Education*
- *Healthcare*
- *Commercial buildings*



Steel Frame Systems

Kingspan design and manufacture specialised steel framing sections and connection methods for fast-track building of loadbearing superstructures across all sectors.

Kingspan steel frame systems feature galvanised steel sections to form structural elements of a building frame. Loadbearing internal and external wall steel frames, fixed to a base ringbeam and intermediate floor or roof structures, provide structural stability and integrity to the building.

Kingspan Steel Frame allows for use of concrete intermediary floors up to 6 storeys.

Steel frame systems are designed to project specific requirements, and factory-assembled into building frame panels, providing certainty of cost, quality, reliability and build programme.

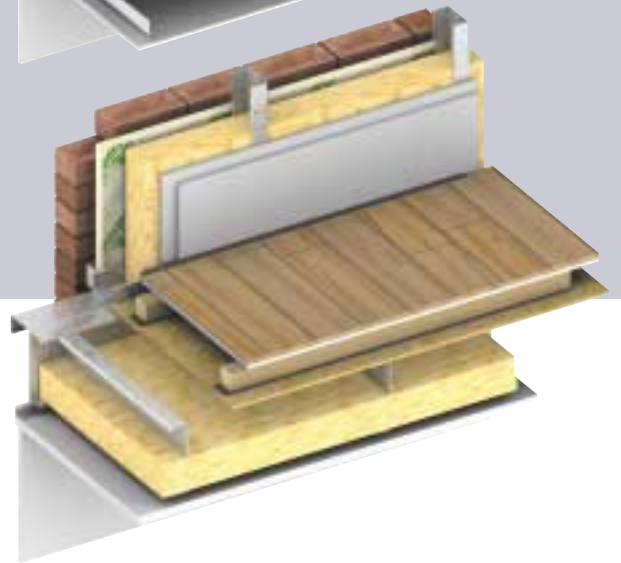
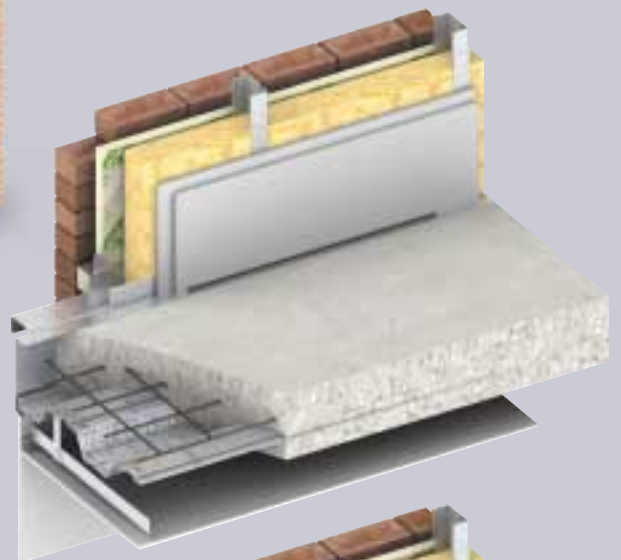
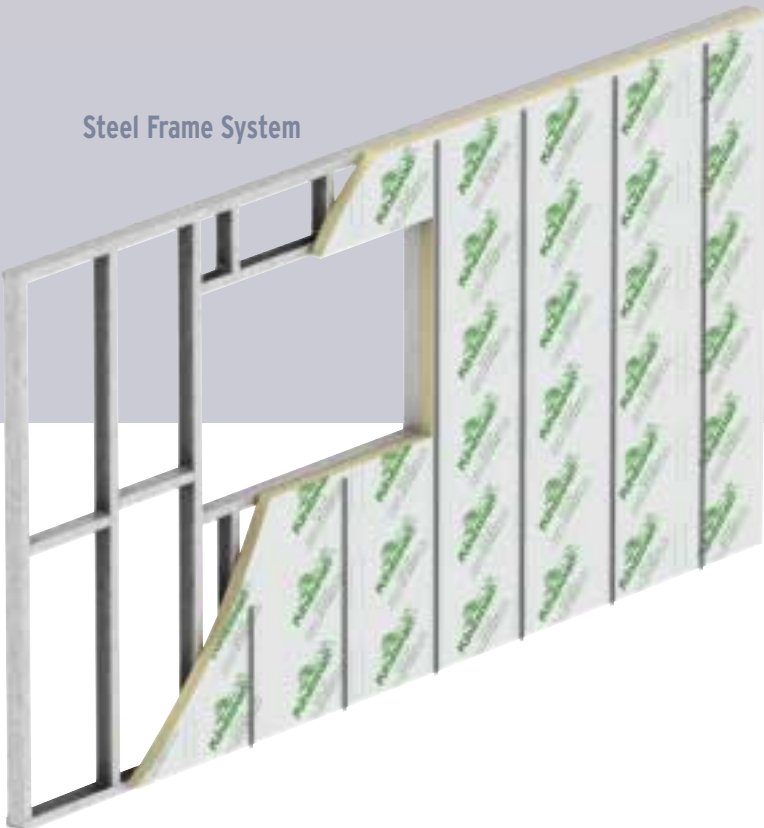


***Suitable for buildings up to 6 storeys
across the following sectors:***

- *Private and affordable housing*
- *Education*
- *Healthcare*
- *Commercial buildings*



Steel Frame System



Hybrid Systems

Kingspan have married the benefits of both timber frame and steel frame to offer their Hybrid Solution. Ideally suited to projects where a concrete floor is required on the first floor, ie. duplex units with separate occupancy units below or in such cases of 2 storey nursing homes / hospitals etc. Kingspan Hybrid Systems offers a cost effective energy efficient off-site solution.



Suitable for buildings across the following sectors:

- *Private and affordable housing*
- *Education*
- *Healthcare*
- *Commercial buildings*

With requirements for:

- *Energy efficiency*
- *Concrete intermediate floors*

Steel Frame System

Timber Frame System

TEK System

Kingspan TEK Structural Insulated Panel Systems (SIPs)

Worldwide, there has been a tradition of the use of wood in building. It is the most widely used building material. Wood is easy to handle, a natural material and brings flexibility to design. Today, many buildings are built with traditional timber frame structures and this trend will grow as Building Regulations / Standards strive for better U-values and the construction industry drives for more and more off-site construction of buildings.

In the UK and Ireland, demand for off-site construction methods such as *Kingspan TEK*® Building System (SIPs) is growing rapidly. This is being driven by factors such as, the availability of on-site skills being at an all time low and the need for organisations such as local authorities and housing associations to innovate and become Egan compliant. The introduction of SIPs technology, through systems such as the *Kingspan TEK*® Building System is playing a major role in meeting this demand.



Suitable for buildings up to 4 storeys across the following sectors:

- Private and affordable housing
- Education
- Healthcare
- Commercial buildings





The revised Building Regulations / Standards are demanding much higher levels of energy efficiency. This is challenging many traditional construction systems and, in some instances, forcing people to look at alternative ways of meeting the requirements more economically. Unparalleled energy efficiency combined with high build-speed and low site wastage makes the **Kingspan TEK®** Building System a very cost effective way of exceeding the new Building Regulations / Standards.

TEK System

Architectural Facade Systems

Governments, property investors, designers, constructors, occupiers and tenants are recognising the benefits of Modern Methods of Construction (MMC) using 'off-site' techniques based on factory manufactured and assembled systems and solutions.

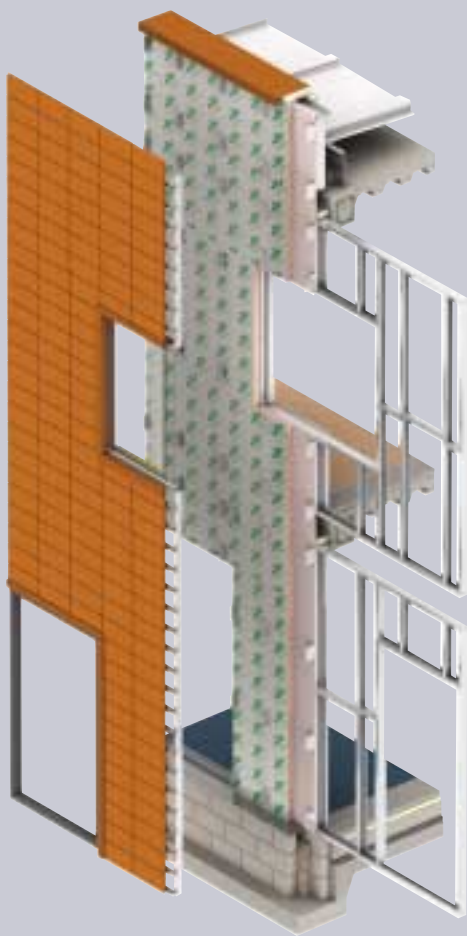
These systems are suitable for the following building facade applications, providing total 'foundation-to-roof' construction solutions:

- *Single storey facades - recessed or face-fixed*
- *Multi-storey facades - face-fixed*
- *Spandrel facades (dado, intermediate floors, eaves) - recessed or face-fixed*
- *Dado Wall - face-fixed*



Kingspan Architectural Facade Systems can be integrated with the following external facing options, providing designers with an almost unlimited choice of materials, finishes, colours and textures:

- *Conventional Systems*
- *Render Systems*
- *Ventilated Rainscreen Systems*
- *Insulated Panel Systems*
- *Dado Wall Systems*

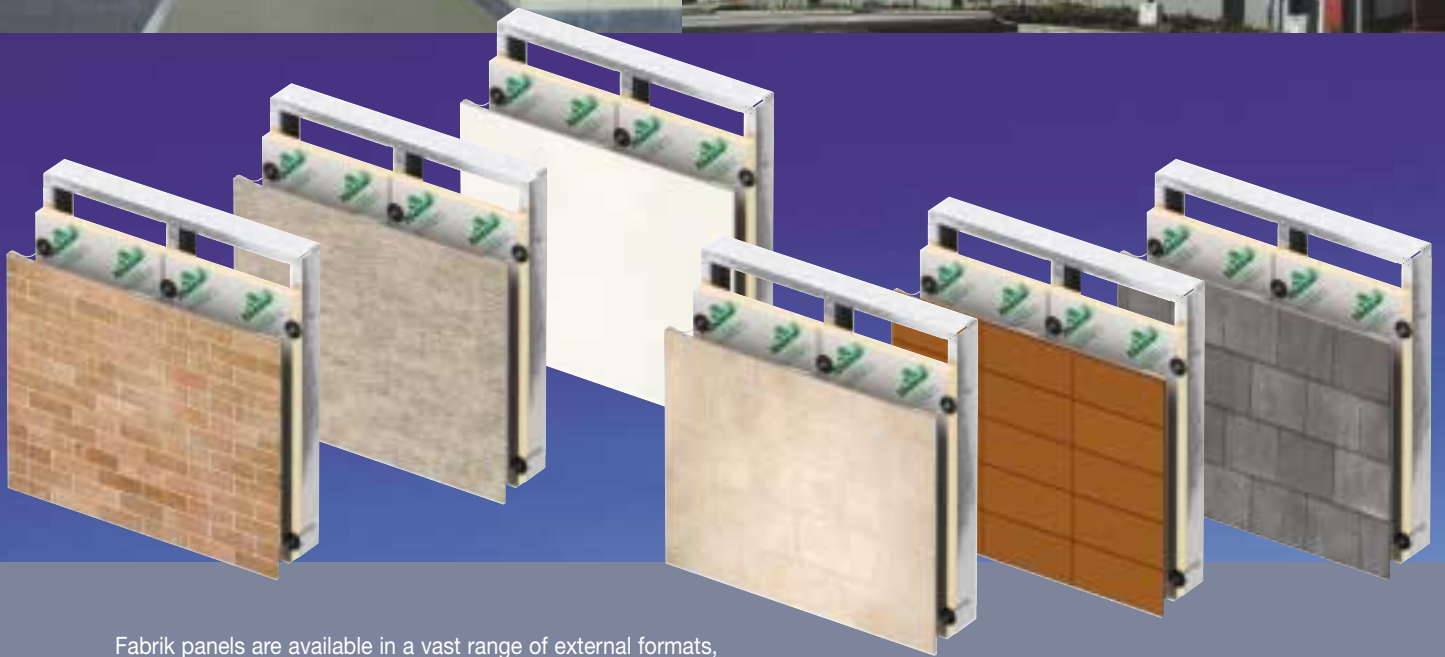


Kingspan Fabrik GRC Facade

Fabrik facade systems are suitable for application on to steel, concrete or timber framed buildings up to any height. Additionally, the system is ideal for dado wall applications.

The system can be connected to the main structure in three ways:

- *Face-fixed;*
- *Recessed; or*
- *Spandrel*



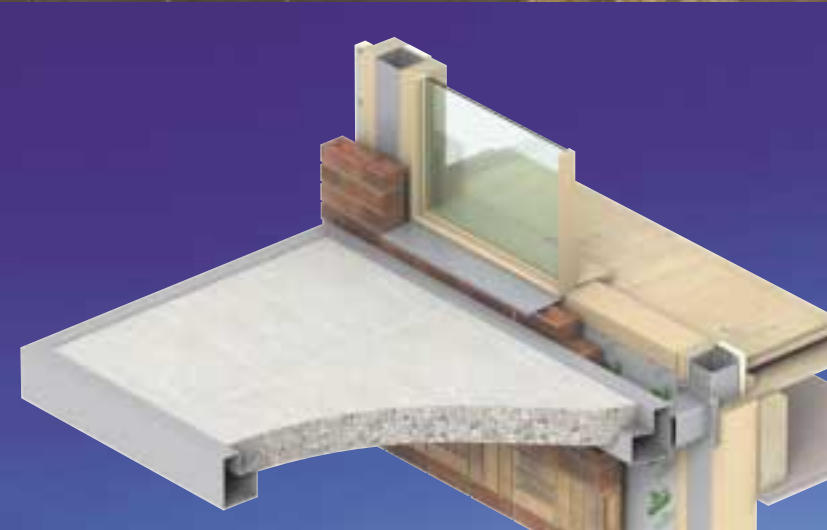
Fabrik panels are available in a vast range of external formats, textures and colours, which match natural materials.

They feature either a sand blasted or polished finish, including:

- *Brick*
- *Stone (including sandstone, Portland, granite)*
- *Fair-face concrete*
- *Smooth render*
- *Textured render*
- *Hung slate and tile*
- *Terracotta (small, medium and large format)*
- *Patterned*
- *Project bespoke finishes are available*

Balconies

Integrated Cantilever Balcony Solutions with a range of floor finishes including concrete, for use with all Kingspan Timber & Steel Systems. The system incorporates thermal-breaks to maintain the building envelopes thermal performance and is available with an extensive range of pre-engineering integral balustrade options, all of which can incorporate a proprietary winter garden glazing system.



Renewable Technology

Kingspan timber, steel and hybrid systems are suitable for the integration of renewable technologies. This integration provides low Carbon, 'future-proofed' developments with the ability to become zero Carbon.

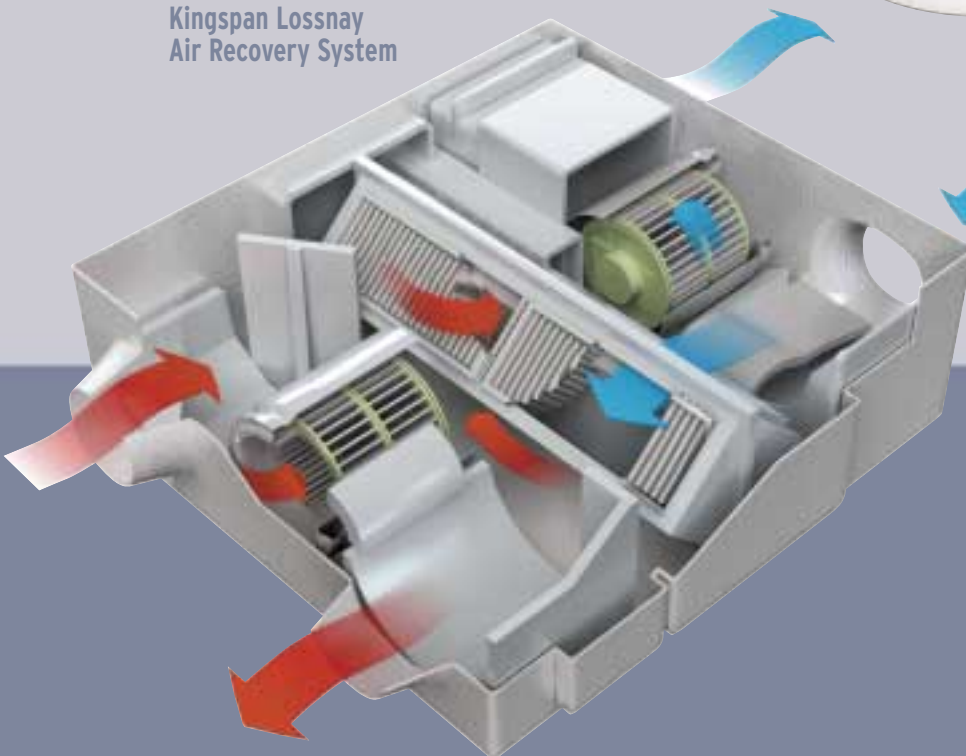
Kingspan Range Cylinder

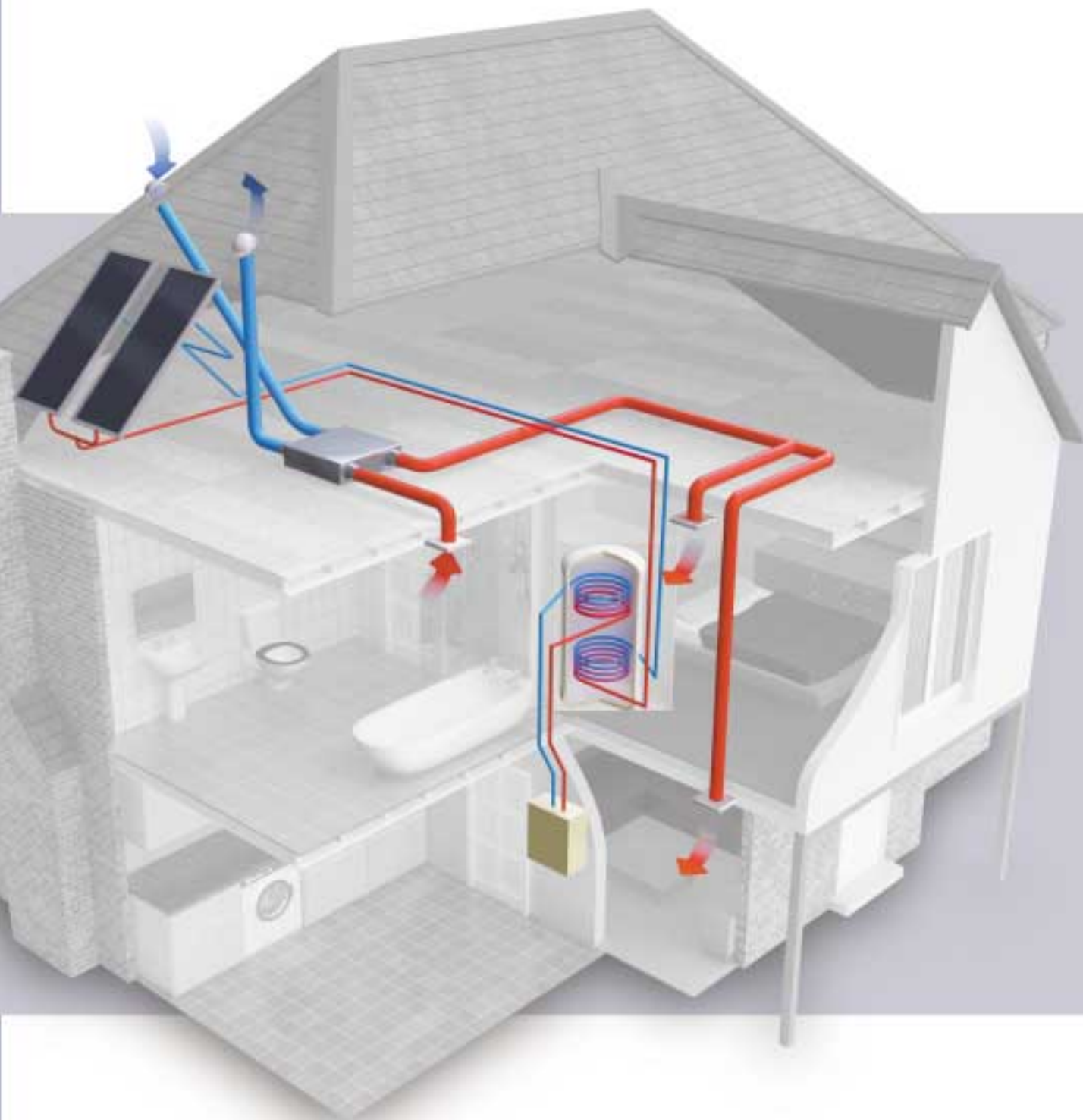


Renewable technologies suitable for integration are:

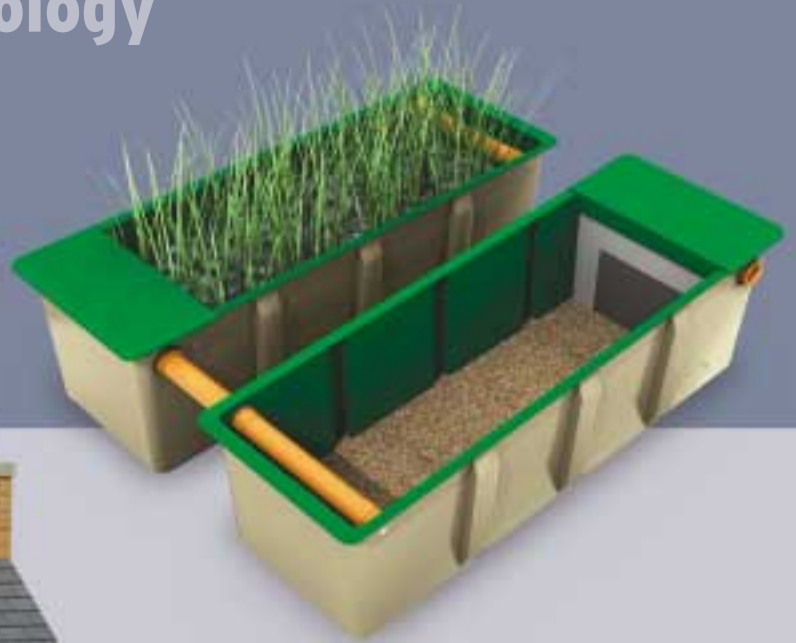
- Solar hot water and photovoltaics
- Mechanical ventilation with heat recovery units (MVHR)
- Biomass
- Gas fired combined heat and power (CHP)
- Rainwater harvesting
- Reed beds

Kingspan Lossnay Air Recovery System





Renewable Technology

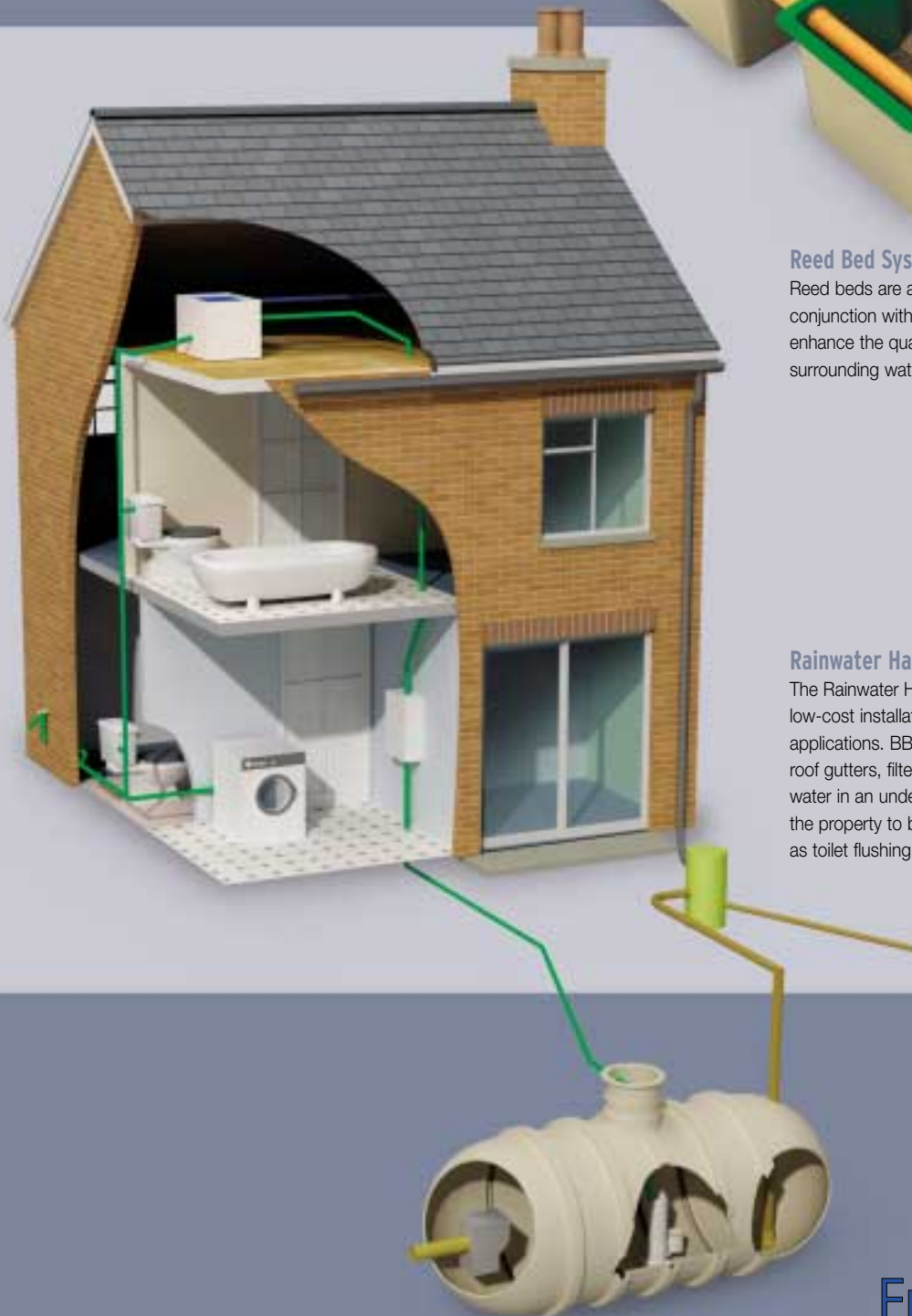


Reed Bed Systems

Reed beds are a natural filtration process, used in conjunction with a sewage treatment plant, to further enhance the quality of the effluent migrating into the surrounding watercourse.

Rainwater Harvesting Systems

The Rainwater Harvesting system has been designed as a low-cost installation for both residential and commercial applications. BBA certified, it works by taking the rain from roof gutters, filtering out leaves and debris and storing the water in an underground tank. This is then pumped into the property to be used for non-potable applications such as toilet flushing, washing machines and vehicle washing.



Kingspan Envirodek™

Structural Green Roof Solution

KS1000 XD provides X-treme spans of up to 8 metres while offering substantial weight savings against conventional built-up multi-part roofs by eliminating secondary steelwork. Rapid pre-engineered single component single-fix installation reduces site installation time and achieves a build speed performance of up to 1,500m² per day.

Site safety is not compromised due to the use of proven 'Ground to Roof' handling installation methods and equipment. The system can incorporate internal sprinklers, cable, wire and lighting, daylighting, ventilation and project specific penetrations.



Kingspan Kingzip

Kingzip® standing seam roof system is suitable for applications on roof slopes over 1.5 degrees. The steel faced panel can also be utilised on curved roofs over 125m radius. Kingzip is available in 500mm and 1000mm cover widths.

Plain aluminium faced panel end laps can be site welded to provide full continuity of the external weather facing. The simplicity of the system allows rapid site installation and fast project handover.

Waste Water Solutions

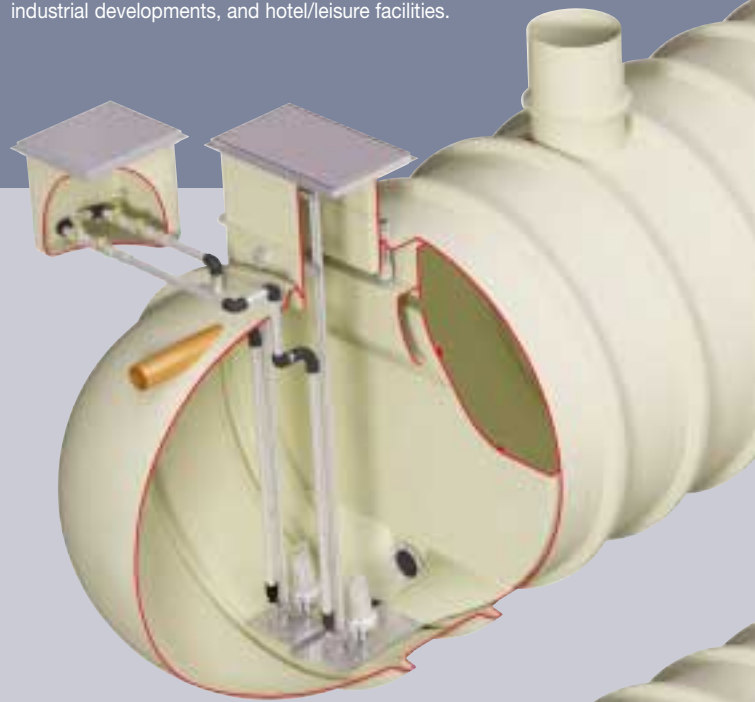
P-Range Sewage Treatment Plants

A range of high performance sewage treatment plants for domestic dwellings and commercial applications without access to mains drainage. The P-Range provides an efficient and environmentally safe solution from a 2 bedroomed house up to a population equivalent of 1,500.



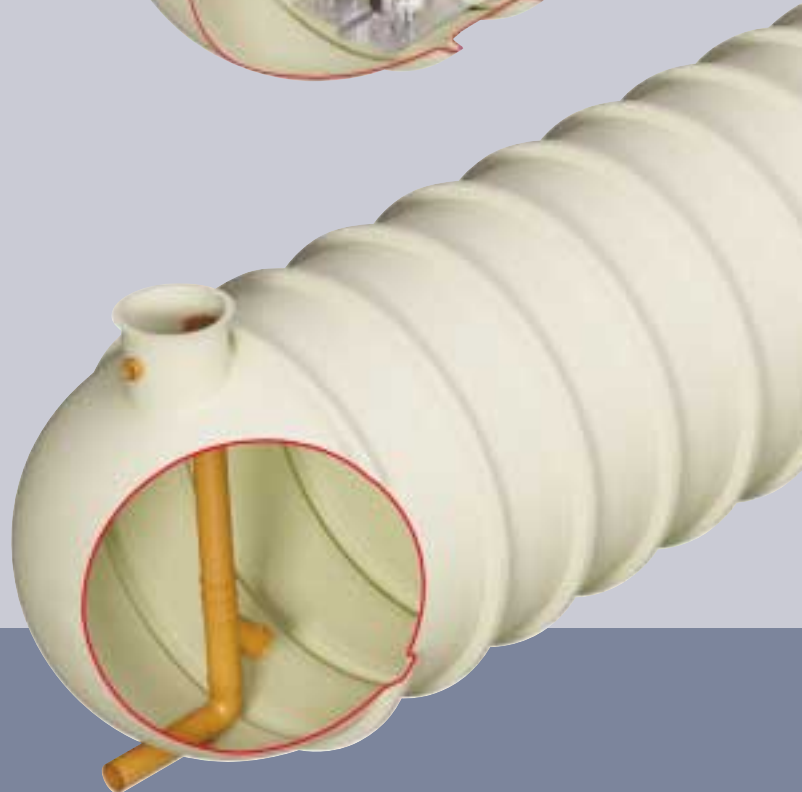
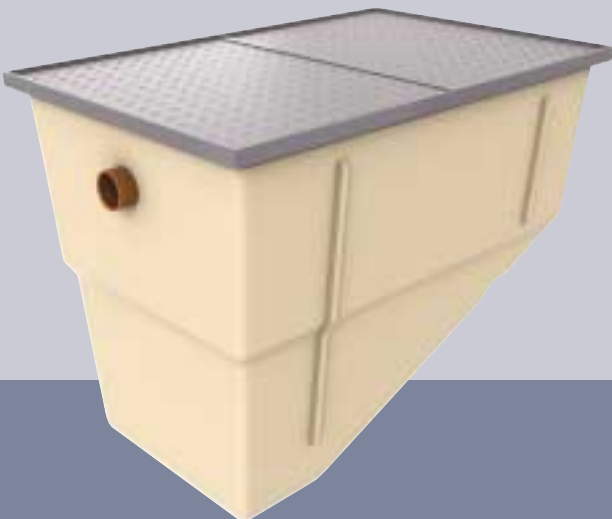
Pumpstore Waste Water Pumping Stations

High capacity pumping systems for domestic and commercial applications, including housing developments with up to 24hr storage requirements (10 - 500 houses), commercial and industrial developments, and hotel/leisure facilities.



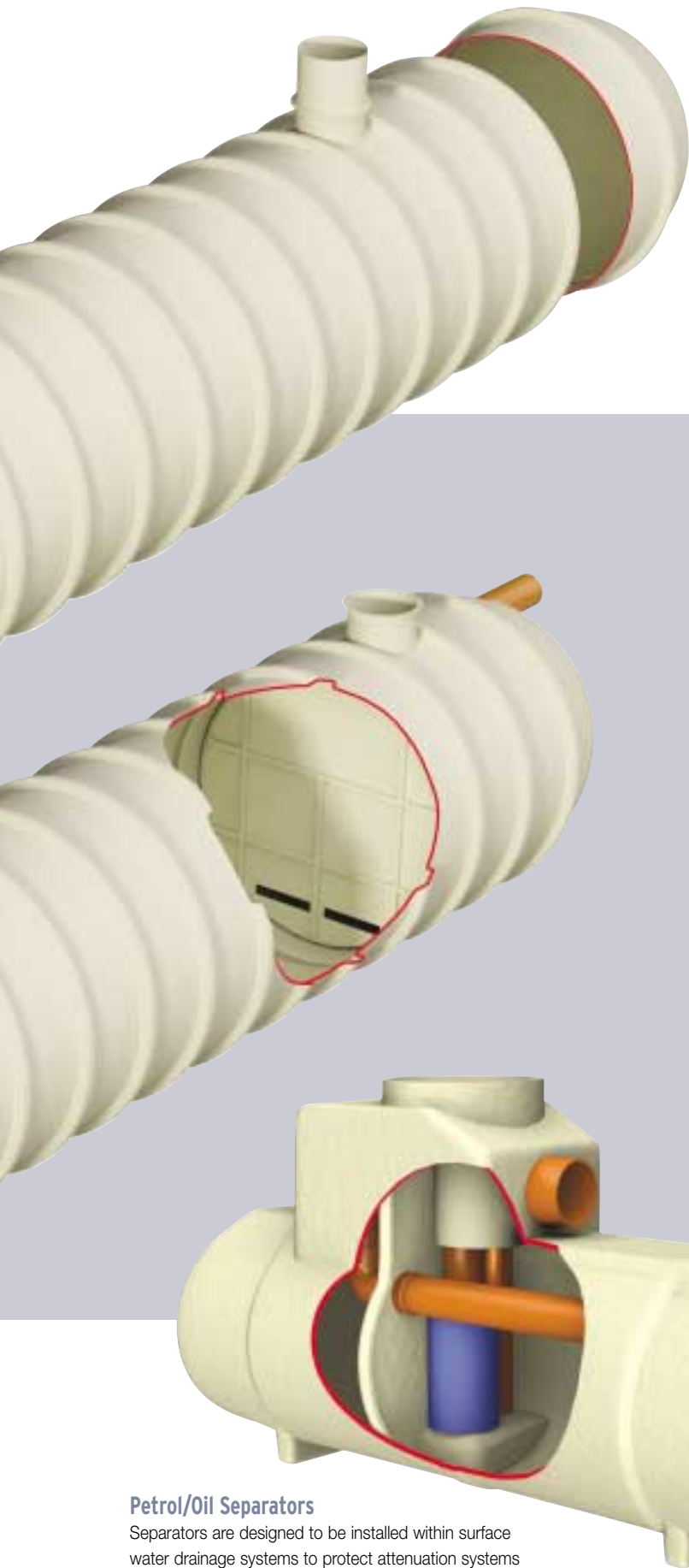
Grease Traps

Grease Traps are an effective and hygienic method of separating fat and grease from waste water flow.



Stormwater Attenuation Systems

Stormwater attenuation systems limit and control the flow of rainwater run-off from a development and protect local watercourses from the contamination carried in the surface water. Additionally, they encourage natural groundwater recharge (where applicable), and reduce the likelihood of downstream flooding.



Pump-Pac Waste Water Pumping Stations

For developments where drainage by gravity is not possible, including surface water pumping, domestic sewage pumping, effluent pumpsets for sewage treatment plants, septic tank pumpsets and 24 hour storage chambers.



Petrol/Oil Separators

Separators are designed to be installed within surface water drainage systems to protect attenuation systems and receiving waters from pollution by oil and hydrocarbons.



Kingspan Century Limited

Clones Road, Monaghan, Co. Monaghan, Ireland.

Tel: +353 47 81270 Fax: +353 47 84397 Email: salesdesk@century.ie

Web: www.century.ie